

**Monday May 11<sup>th</sup>.**

**English**

- Word Study – some more commonly misspelled words.
- As it is Monday get someone at home to test you on these words in a copy or on a sheet of paper. Score yourself and then carry out one word study activity such as rainbow writing, staircase writing etc

temperature
temporary
through
toward
tries
truly
twelfth
until
unusual
using
usually
village

- Read for 15mins.
- “Explanation Writing”. Explanatory writing means writing to explain. Below I have typed up an explanation on cyclones as a cloze procedure. Write this in your copy filling in the blanks with the words in the box provided.

<b>eye   circle   Storms   funnel   inland   months   energy   waves   heed equator   trees   typhoons</b>
----------------------------------------------------------------------------------------------------------------

**Cyclones**

Cyclones are fierce tropical \_\_\_\_\_. Winds may often reach more than 150km per hour. Cyclones are known as ‘\_\_\_\_\_’ when they occur in the Far East and as ‘hurricanes’ in the Atlantic Ocean.

Cyclones usually occur in warmer \_\_\_\_\_ and generally begin over warm seas as thunderstorms. Wind and cloud start to spin in a \_\_\_\_\_ becoming faster and faster. Cyclones usually begin close to the \_\_\_\_\_.

Cyclones look like a large \_\_\_\_\_ of swirling wind. They have a calm part in the centre called the ‘\_\_\_\_\_’.

Cyclones spin in a large circle and they fade away as they go further \_\_\_\_\_. They need the sea or water to maintain \_\_\_\_\_.

Cyclones can cause tidal \_\_\_\_\_, rip up \_\_\_\_\_ and even destroy houses. They can also destroy many people’s lives.

It is important that people \_\_\_\_\_ cyclone warnings.

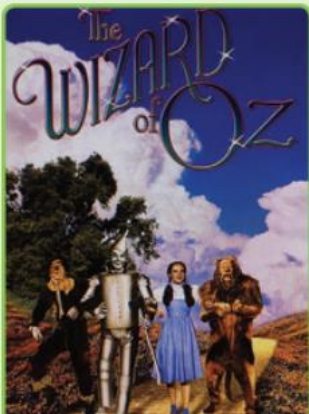
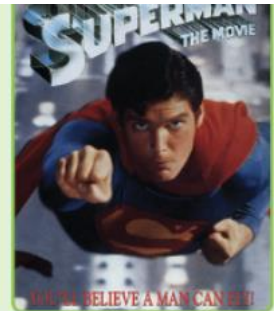
- - **Vocabulary development:** last week we looked at and completed activities based on personification. This week I am going to ask you to complete some activities based on analogies. Below is an explanation on what an analogy is. In your work pack I have included some worksheets that you can complete on analogies. You do not need to be able to print these to complete them just complete them in your copy.
- Example of an analogy: declare is to say as ask is **to answer/question?**
- Analogies **show the relationships** between two pairs of words.
- E.g. finger is to hand as petal is to flower
- A finger is part of a hand. A petal is part of a flower.
- Look at the analogy.
- declare is to say as ask is to ?
- First, define the relationship between declare and say.
- Declare is a synonym of say.
- You need to find the answer choice that has the same relationship with ask.
- Ask is a synonym of ?
- Now try out each answer choice.
- Ask is a synonym of answer? No.
- Ask is a synonym of question? Yes.
- Complete the analogy with the word question.

## Irish

- Léigh an sliocht agus freagair na ceisteanna. Read the piece and answer the questions.

### Superman

Tháinig an chéad scannán *Superman* amach sa bhliain 1978. Is scannán aicsin é. Tá an scannán bunaithe ar ghreannán. Tháinig Superman ón bpláinéad Krypton go dtí an domhan seo. Sártaoch ab ea é. Bhí cumhachtaí speisialta aige: bhí sé in ann eitilt agus bhí sé an-láidir ar fad. Is é Lex Luthor an droch-charachtar sa scannán. Bíonn Superman le feiceáil fós i scannáin, mar shampla sa scannán *Batman v Superman*.

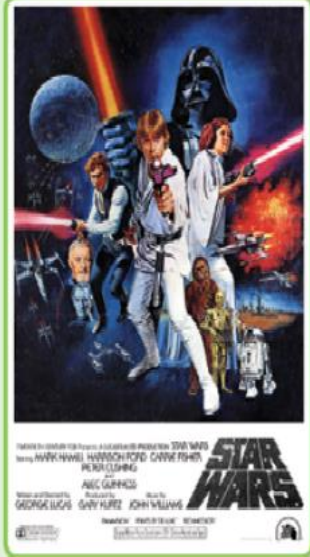


### The Wizard of Oz

Tháinig an scannán *The Wizard of Oz* amach sa bhliain 1939. Is ceoldráma é. Tá an scannán bunaithe ar leabhar. Is í Dorothy laoch an scannáin. Tá an cailín óg seo i dTír Oz agus í ag iarraidh dul abhaile go Kansas. Áit dhraíochta é Oz. Buailéann Dorothy le go leor carachtar suimiúil ann. Leanann siad Bóthar na mBricí Buí go dtí an Emerald City chun an Wizard of Oz a fheiceáil. Is iad na carachtair eile sin an fear bréige, an fear iarainn agus an leon. Is í an Wicked Witch of the West an droch-charachtar sa scannán seo.

## Star Wars

Tháinig an scannán *Stars Wars* amach sa bhliain 1977. Is scannán ficsean eolaíochta (Sci-Fi) é. Thaitin an scannán le daoine idir óg agus aosta. Chuir daoine aithne ar na laochra Chewbacca, Hans Solo, Luke Skywalker agus an Banphrionsa Leia agus, ar ndóigh, ar an droch-charachtar Darth Vader. Thaitin an dá róbat C-3PO agus R2-D2 go mór le daoine. Bhí siad an-ghreannmhar ar fad. Tá naoi scannán sa tsraith *Star Wars* anois. Tháinig criú *Star Wars* go Scellig Mhichíl amach ó chósta Chiarraí chun an radharc deireanach sa scannán *Stars Wars: The Force Awakens* a dhéanamh.



### A. Freagair na ceisteanna.



1. Cathain a tháinig an chéad scannán *Superman* amach?
2. Cad iad na cumhachtaí speisialta a bhí ag Superman?
3. Cé hé an droch-charachtar i *Superman*?
4. Cén sórt scannáin é *The Wizard of Oz*?
5. Cé hí laoch *The Wizard of Oz*?
6. Cá raibh Dorothy agus a cairde ag dul?
7. Cé hiad na carachtair i *Star Wars*?
8. Cén fáth ar tháinig criú *Stars Wars* go hÉirinn?
9. Cén fáth, meas tú, a rinneadh scannáin eile *Star Wars* tar éis an chéad scannáin?



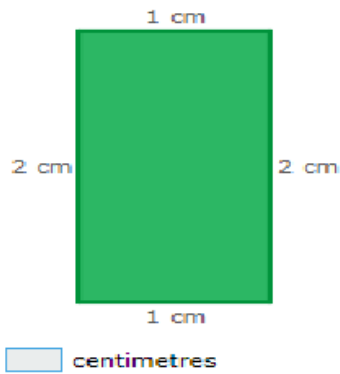
Cad é an scannán is fearr leatsa? Cén fáth?

## Maths

- Check out [www.IXL.com](http://www.IXL.com). This website has been made free to access for the next number of weeks. It is an excellent website as it shows children step by step instructions to solve math problems. Over the next week I would ask children to use this website to learn about **Area** and **Perimeter**. Today you will be looking at **perimeter**. The **perimeter** of a shape is the distance around a shape. It is the total length of the shape's sides.

question

What is the perimeter of the rectangle?

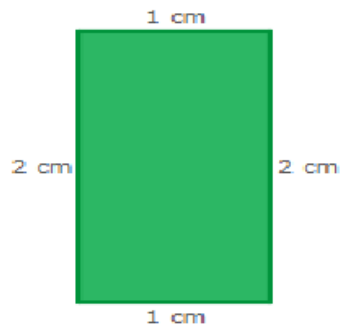


key idea

The **perimeter** of a shape is the distance around the shape. It is the total length of the shape's sides.

solution

To find the perimeter, find the total length of the shape's sides.



Add all of the side lengths.

$$1 + 2 + 1 + 2 = 6$$

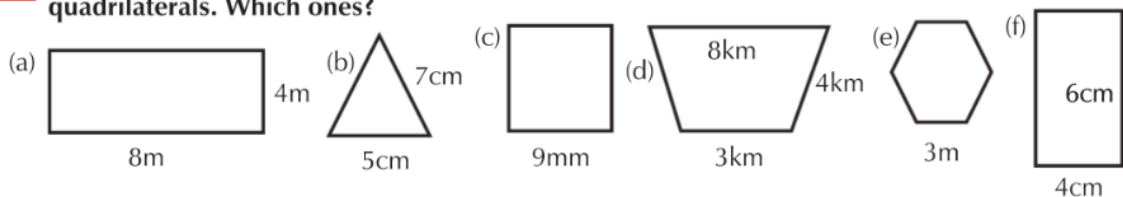
- Here is a warm up activity that you can carry out based on perimeter:  
<https://ie.ixl.com/math/class-5/perimeter>

- Here are some questions that you can answer in a copy or on a sheet of paper. Remember to keep your work tidy and to show all your workings not just an answer.

### Perimeter

The perimeter of a shape is the total length around its sides. The shapes are not drawn to scale.

**C** Find the perimeter of each polygon. Can you name each shape? Four of these shapes are quadrilaterals. Which ones?



- There are some more worksheets on perimeter included in the work pack for today. If you wish to complete them please do. You can print them if you have a printer at home or else view them on your device and complete them in a copy.

**Remember: any pictures of completed work that you email me I will correct and email back to you with feedback included.**

## **Geography**

Last week I outlined how to begin a research project on the country of Australia. If you did not begin it yet and would like to you can click on the link and it will bring you to what I outlined last week <http://www.ballindagginns.ie/wp-content/uploads/2020/05/Suggested-Work-Week-5.pdf>

This week I would like you to add the following to your project:

1. **Australian sports.** List the top 5 sports that are played in Australia and how many people are involved in each sport. You can use this link to research the facts <https://www.onthegosports.com.au/news/10-most-popular-sports-australia> I would also like you to name one famous Australian person associated with each of the top 5 sports. You will need to find their names yourself. If you are using PowerPoint to do your project you can insert pictures of each sport. Write about each of the sports on a new slide. If you are not using PowerPoint that is no problem. You can write about each of the sports and decorate the page with a simple drawing or symbol for each fact.
2. **Australian school.** Use Google to read about Primary School in Australia. I want you to write about 3 ways that primary school in Ireland is similar to primary school in Australia and 3 ways in which it is different. Use a new slide to write about each similarity and each difference. Include pictures that you think suit each fact you are writing about. Remember to give each new slide a title. Again if you are not using PowerPoint that is ok just research the information and write it out into a copy or onto some paper and decorate each fact using symbols, pictures and colour. Some facts you might wish to research could include the following; **what time does school start at? How long is the school day? What subjects are similar or different? Do they wear a uniform? What school holidays do they get? For how many days each year do children have to go to school? What age do children go to primary school at?** Try to think of some more yourself.